

2009  
ATLANTA GEORGIA



73rd Annual Educational Conference (AEC) & Exhibition • Sunday, June 21—Wednesday, June 24 • Hyatt Regency Atlanta

# CONFERENCE PROGRAM

A revealing look at how the environmental health profession is evolving.



# PRE-CONFERENCE

## THURSDAY

---

### WORKSHOPS

8:00am – 5:00pm ..... Environmental Health Training in Emergency Response  
(EHTER) – Introductory Level\* | **Off Site**

## FRIDAY

---

### CREDENTIAL COURSES

8:00am – 5:00pm ..... Certified Professional of Food Safety (CP-FS)\*/\*\* | **Fairlie Room**

8:00am – 5:00pm ..... Registered Environmental Health Specialist/Registered Sanitarian  
(REHS/RS)\*/\*\* | **Greenbriar Room**

### WORKSHOPS

8:00am – 5:00pm ..... Environmental Health Training in Emergency Response  
(EHTER) – Introductory Level\*\* | **Off Site**

## SATURDAY

---

### CREDENTIAL COURSES

8:00am – 3:00pm ..... Healthy Homes Specialist (HHS) **CANCELLED**

8:00am – 5:00pm ..... Registered Environmental Health Specialist/Registered Sanitarian  
(REHS/RS)\*/\*\* | **Greenbriar Room**

### EXAMS

8:00 – 10:30am..... Certified Professional of Food Safety (CP-FS)\*/\*\* | **Fairlie Room**

3:30 – 5:30am ..... Healthy Homes Specialist (HHS) **CANCELLED**

### WORKSHOPS

8:00am – 5:00pm ..... Guidance on Moisture and Mold: A Workshop for Environmental  
Health Professionals and Health Practitioners | **Kennesaw Room**

8:00am – 5:00pm ..... Environmental Health Training in Emergency Response  
(EHTER) – Introductory Level\*\* | **Off Site**

8:30am – 4:30pm ..... Environmental Public Health Performance Standards Workshop:-  
Building Local and National Excellence **CANCELLED**

8:30am – 5:00pm ..... HACCP Manager Certification Course\* | **Baker Room**

8:30am – 5:00pm ..... NSF Plan Review Survey Course\* | **Auburn Room**

8:00am – 5:00pm ..... Train-the-Trainer Workshop: Presentation Skills for Food Safety  
Educators\* | **Courtland Room**

## MONDAY

---

### EXAMS

8:00 – 12:00Noon ..... Registered Environmental Health Specialist/Registered Sanitarian  
(REHS/RS)\*/\*\* | **Fairlie Room**

### WORKSHOPS

8:30am – 12:00Noon ..... Environmental Public Health Tracking Workshop\*\* | **Greenbriar Room**

\*Fee not included in conference registration.

\*\*Application required to participate.

# SUNDAY AGENDA

---

- 7:00am – 8:00pm ..... NEHA Registration | **Grand Hall West Foyer**
- 8:00 – 8:30am ..... First-Time Attendee Orientation | **Hanover A-B**
- 8:30 – 11:30am..... Awards Ceremony & Keynote Session | **Centennial Ballroom I-II**
- 12:00Noon – 5:00pm ..... Exhibitor Set Up | **Grand Hall West**
- 1:00 – 4:50pm ..... Educational Sessions | **See Sunday Educational Sessions**
- 5:30 – 6:30pm ..... AAS Wagner Award & USPHS Honor Awards Reception | **Hanover C**
- 6:00 – 9:00pm..... Exhibition Grand Opening & Party | **Grand Hall West**
- 8:30pm..... Door Prize Winner Announced\*\* | **Grand Hall West**

## MEETINGS

---

- 11:45am – 1:30pm ..... Uniformed Services Environmental Health Association (USEHA)  
Business Meeting & Luncheon\* | **Hanover E**
- 1:00 – 3:45pm ..... Affiliate Presidents Meeting | **Hanover A-B**
- 1:30 – 4:00pm ..... Association of Environmental Health Academic Programs  
(AEHAP) Annual Meeting | **Inman Room**

\*Fee not included in conference registration.

\*\* Must be present to win.

# SUNDAY EDUCATIONAL SESSIONS-AT-A-GLANCE

	8:30 - 11:30am	1:00 - 1:50pm	2:00 - 2:50pm	3:00 - 3:50pm	4:00 - 4:50pm	6:00 - 9:00pm
<b>Environmental Health Research</b>	Implications of Carbon Nanotube (CNT) Exposure in Public Health Perspective: CNT as Another Asbestos?	Food Safety Practices in the Home Baseline Survey	Issues that Drive Research on Onsite Wastewater Treatment Systems and How Florida Responds to the Challenges: a Glimpse into the Florida Department of Health's Onsite Sewage Research Program	Healthy Housing and Farm Life Across the Pond: My Sabbatical Experience		
<b>Food Safety and Protection</b>	Updates from the 2009 FDA Food Code	Transcending Language Barriers to Food Safety: Practical Tools and Strategies for the Food Industry	Modifying Food Worker Behaviors	Halal from the Environmental Health Perspective: Not Just Food		
<b>Institutions and Schools Environmental Health</b>	Protecting Our Students through Responsible Chemical Management: A Case Study of a Successful Schools Chemical Cleanup Campaign (SC3) Project in Jefferson County, Alabama	Students' Perspectives on Worldwide "Greening" of Tertiary Education Curricula for Sustainability	Developing an International Competence-Based Curriculum to Support the Education and Development of Current and Future Environmental Health Practitioners	Exploring the Environmental Health and Industrial Hygiene Academic Curricula: Expectations And Perceptions Of The Profession		
<b>Onsite Wastewater Systems</b>	Sloping Lateral Flow Sand Filter Trenches and Constructed Wetlands as Innovative Secondary Treatment Methods	The Black And White on Grey Water	Douglas Colorado Nitrate Study: Lessons Learned	Drip Systems - Then & Now: Experiences of the Technology's Pioneer		
<b>Sustainability</b>	Community Planning Through The Eyes of Environmental Health	Sustainable Public Health: The Florida Experience	Mega Cities, Environmental Public Health, and Sustainability	Moderated Roundtable Discussion: Sustainability and the Built Environment		
<b>Terrorism and All-Hazards Preparedness</b>	The National Guard Weapons of Mass Destruction Civil Support Teams (WMD-CST's) and Military Emergency Science: A Terrorism and All-Hazards Asset	Assessing Environmental Health Emergency Preparedness in Minnesota	Environmental Health Preparedness: Integrating Homeland Security Target Capabilities into Environmental Health Programs - The Florida Experience	Development of a Chemical Contact Matrix Identifying Responsibilities as Part of the Local All-Hazards Response		
<b>Learning Laboratory</b>	AWARDS CEREMONY & KEYNOTE ADDRESS					
<b>Environmental Health Leadership Development</b>	Improving Your Agency's Monitoring Capability Through the Use of the Environmental Public Health Performance Standards (PROFESSIONAL DEVELOPMENT)	Developing Internet-Based Educational Programs (PROFESSIONAL DEVELOPMENT)				
<b>General Environmental Health</b>	Student and Young Professional Career Forum and Mentoring Program (PROFESSIONAL DEVELOPMENT)					
<b>Indoor Air Quality</b>	The Truth About Air Fresheners and Air Care Products 1:00 - 2:30pm	Assessing and Managing Mold After A Flood: Matching the Method to the Material 3:30 - 4:50pm				
<b>New Government Structure</b>	How to Work with State Legislators (PROFESSIONAL DEVELOPMENT)	State and Local Government: Limited Budgets, Unlimited Demands (PROFESSIONAL DEVELOPMENT)	Starting All Over? Where Should Environmental Health be in the Future? 3:30 - 4:50pm (PROFESSIONAL DEVELOPMENT)			
	EXHIBITION GRAND OPENING & PARTY Door prize winner announced   8:30pm					

# MONDAY AGENDA

\*Fee not included in conference registration.

\*\*Application required to participate.

\*\*\* Must be present to win.

- 7:00am – 5:00pm ..... NEHA Registration | **Grand Hall West Foyer**
- 8:00 – 9:00am ..... Technical Section Chairs Breakfast | **Baker Room**
- 8:00am – 12:00Noon ..... Onsite Wastewater Treatment Systems Field Trip\* | **Off site**  
(Bus will depart from Front Entrance at 8:00 am)
- 8:00am – 12:00Noon ..... REHS/RS Credential Exam\*/\*\* | **Fairlie Room**
- 8:30am – 12:00Noon..... Environmental Public Health Tracking Workshop | **Greenbriar Room**
- 8:30 – 9:00am ..... NSF International Scholar Award Presentation | **Kennesaw Room**
- 9:00 – 11:30am ..... Student Research Presentations | **Kennesaw Room**
- 1:00 – 4:50pm ..... Educational Sessions | **See Monday Educational Sessions**
- 5:30 – 9:00pm ..... UL Aquarium Event\* | **Georgia Aquarium**  
(5:30-7:30pm access to exhibits, 7:00-9:00pm hors d'oeuvres and cash bar)

## EXHIBITION

- 8:00am – 3:30pm ..... Exhibition Open | **Grand Hall West**
- 8:00 – 11:00am ..... Poster Session | **Grand Hall West**
- 10:00am ..... Door Prize Winner Announced\*\*\* | **Grand Hall West**
- 11:00am ..... Silent Auction Finale | **Grand Hall West**
- 11:30am – 12:45pm ..... Lunch-N-Learn (Cash Concession Lunch) | **Grand Hall West**
- 1:30pm ..... Door Prize Winner Announced\*\*\* | **Grand Hall West**
- 3:30 – 6:00pm ..... Exhibitor Tear-Down | **Grand Hall West**

## MEETINGS

- 11:30am – 2:45pm ..... AAS Luncheon & Business Meeting\* | **Hanover C**
- 2:00 – 3:30pm ..... National Conference of Local Environmental Health Administrators (NCLEHA) Annual Meeting | **Edgewood Room**
- 4:00 – 6:00pm ..... Association of Environmental Health Academic Programs (AEHAP) New Member Workshop | **Fairlie Room**

## NEHA REGIONAL CAUCUS MEETINGS

Everyone is invited to attend their NEHA regional caucus meeting being held on Monday. This is a chance to meet your region's vice president and learn more about what's going on in your region.

The following is a list of NEHA's regions and the states within those regions:

Region 1: AK, ID, OR, WA

Region 2: AZ, CA, HI, NV

Region 3: CO, MT, UT, WY

Region 4: IA, MN, ND, NE, SD, WI

Region 5: AR, KS, LA, MO, NM, OK, TX

Region 6: IL, IN, KY, MI, OH

Region 7: AL, FL, GA, MS, NC, SC, TN

Region 8: DE, MD, NJ, NY, PA, VA, WV, Washington, DC

Region 9: CT, MA, ME, NH, RI, VT

Region 10: Far East Affiliate, Foreign Members, Industry Affiliate, Jamaica, NCLEHA, Past Presidents Affiliate, USEHA

Region 8, 9, 10 9:00 – 9:50am Harris Room

Regions 1 & 2 10:00 – 10:50am Edgewood Room

Region 3 10:00 – 10:50am Harris Room

Regions 5, 6, & 7 10:00 – 10:50am Courtland Room

Region 4 4:00 – 4:50pm Edgewood Room

# MONDAY EDUCATIONAL SESSIONS-AT-A-GLANCE

 Lecture Hall

8:00-3:30pm

1:00-1:50pm

2:00-2:50pm

3:00-3:50pm

4:00-4:50pm

	EXHIBITION OPEN Poster Session   8:00 – 11:00am    Door Prize Winner Announced   10:00am & 1:30pm Silent Auction Finale   11:00am    Lunch-n-Learn   11:30am – 12:45pm			
<b>Injury Prevention/ Occupational Health</b>	National Institute for Occupational Safety and Health: Overview of NIOSH Office of Extramural Programs	Strategic Ways for Safety Personnel to Positively Change the Culture Within Their Organization	NIOSH-funded State Based Occupational Safety and Health Surveillance Program	Severe Injury Surveillance: Building an Efficient and Representative Data Collection System for a Rural Tribal Community
<b>Institutions and Schools Environmental Health</b>	Panel Presentation-Effective Controls in the Nursing Home Inspection Process for Reducing Contributing Factors to Foodborne Illness and Controlling Infections	Superfund and Environmental Justice Education: Teaching Johnson and North Providence Middle School Students About Their Local Environment and Subsequent Evaluation of Program Effectiveness	Integrated Cleaning and Management (ICM): Objectively Measuring How Clean is Clean	ATP: The Latest Sanitation Inspection Tool
<b>Onsite Wastewater Systems</b>		Enhancing the Public Health Perspective on Onsite Wastewater Systems	Assigning Capacity to a Site for Onsite Wastewater Treatment: A Different Regulatory Approach to Meet 21st Century Demands	"Current Topics Open Discussion" Moderated by OSWS Technical Section Chairs
<b>Terrorism and All-Hazards Preparedness</b>	Love, Language, and Leadership! What it Takes for a Successful Large Scale Environmental Health Disaster Response	Wildfire San Diego 2007: Environmental Public Health Decisions Associated with a Public Health Centric Disaster Recovery Process	Environmental Health and Disaster Resiliency	Public Health Infrastructure Sustainability: What are the Priorities?
<b>Solid Waste</b>	EPA Recycling Tool Kit	Brownfields Program and Success Stories	Public Health Monitoring and Revitalization: A New Partnership for an Old Problem	Georgia Solid Waste Management
<b>Sustainability</b>	Taking the Pulse of a Changing Nation: Findings from a Survey on Climate Change and State/Territorial Health Agencies	Ensuring Accountability and Sustainability: Using Coalition Building, Capacity Building, and Community Leadership to Address Environmental Health Hazards in the South Atlanta For the Environment (SAFE) Project	Sustainability UL: A Growing Partnership	Hernando County School District: 2009 NEHA's 2009 Excellence in Sustainability Award Winner
<b>Vector Control and Zoonotic Diseases</b>	Bed Bugs – Doing Our Part – A Community Effort	Green Revolution Then and Now: It's Impact on Managing Pests	Human Rabies Exposure from Feral Cat, Monroe County, Pennsylvania	Developing Collaborative Partnerships for Community-Based Mosquito Control Programs: The Project Moon Dust Model
<b>Learning Laboratory</b>	Environmental Health in a Social Media World <small>(PROFESSIONAL DEVELOPMENT)</small>			
<b>Environmental Health Tracking and Informatics</b>	Food Safety Summit 1:00 – 5:00 pm			
<b>Food Safety and Protection</b>	Special Session: Engaging Food Safety Partners - USDA and FDA		Community Based Health Impact Assessment of Redevelopment Projects in Atlanta	
<b>General Environmental Health</b>	Alternative Outreach Methods: Puppetry and Public Perception <small>(PROFESSIONAL DEVELOPMENT)</small>		Alternative Outreach Methods: Oral Communication Message Stick <small>(PROFESSIONAL DEVELOPMENT)</small>	
	Methods and Strategies for Conducting Community-Based Biomonitoring in a Public Health Context			

# TUESDAY AGENDA

---

- 7:00am – 5:00pm ..... NEHA Registration | **Grand Hall West Foyer**
- 8:30am – 5:20pm ..... Educational Sessions | **See Tuesday Educational Sessions**
- 11:30am – 1:30pm ..... Networking Luncheon | **Centennial Ballroom I-II**
- 5:30 – 6:30pm ..... Uniformed Services Environmental Health Association (USEHA)  
Reception | **Executive Conference Suite 219**
- 6:00 – 9:00pm ..... Environmental Public Health Leadership Institute  
Alumni Dinner | **Greenbriar Room**

## MEETINGS

---

- 7:30 – 9:00am ..... Past Presidents Meeting | **Baker Room**
- 8:30 – 11:30am ..... Industry – Foodborne Illness Investigation Training  
Roundtable | **Executive Conference Room 223**
- 9:00 – 11:00am ..... BOD/Affiliate Presidents Focus Group #1 | **Edgewood Room**
- 9:00 – 11:00am ..... BOD/Affiliate Presidents Focus Group #2 | **Harris Room**
- 9:30 – 11:00am ..... NEHA Endowment Fund Meeting | **Auburn Room**
- 3:00 – 5:00pm ..... BOD/Affiliate Presidents Focus Group #3 | **Edgewood Room**
- 3:00 – 5:00pm ..... BOD/Affiliate Presidents Focus Group #4 | **Harris Room**
- 4:00 – 5:00pm ..... National Coalition for Food-Safe Schools (NCFSS)  
Quarterly Meeting | **Kennesaw Room**

# TUESDAY EDUCATIONAL SESSIONS-AT-A-GLANCE



8:30-9:20am

9:30-10:20am

10:30-11:20am

11:30am - 1:30pm

1:00-1:50pm

2:00-2:50pm

3:00-3:50pm

<b>Ambient Air Quality/ Indoor Air Quality</b>	EPA's CARE Program	Seasonal, Temporal, and Spatial Concentration Variations of Ambient VOCs...	Air Quality and Exposure Science in Africa		Green Buildings, Indoor Air Quality and Health	Mold and Moisture Control in Residential and Commercial Buildings	Formaldehyde- Toxic Effects and Remediation Measures
<b>Children's Environmental Health</b>	Connecting Today's Kids to Nature: Emerging Research in Children's Environmental Health...	The Healthy Homes Partnership Project	How Thousands of Children in Hawaii (Keiki-O-Ka-Aina) are Taught...		A Systematic Review of the Effectiveness of Multi-Component, Multi-Trigger...	The Effect of Green Rehabilitation of Low Income Housing on Children's Environmental Health...	Dirt Alert- Innovative Outreach and Education Strategies to Provide Risk Reduction...
<b>Environmental Health Leadership Development</b>	Framing the Mind: The Science of Perception and Learning (PROFESSIONAL DEVELOPMENT)	Changing the Environmental Public Health Workforce (PROFESSIONAL DEVELOPMENT)	The New State Legislative Make-Up... (PROFESSIONAL DEVELOPMENT)		The History of the Sanitarian Profession (PROFESSIONAL DEVELOPMENT)	An Evaluation of the Environmental Public Health Leadership Institute... (PROFESSIONAL DEVELOPMENT)	Public Health Accreditation Board... (PROFESSIONAL DEVELOPMENT)
<b>Environmental Health Tracking and Informatics</b>	Using Environmental Health Tracking Resources for Health Impact Assessment...	Panel Discussion - Promoting Environmental Public Health Tracking...	Assessing Environmental Health in Your Community		Environmental Public Health Tracking: Facilitating a New Era of Partnerships...	Assessing the Risks to Public Health from Contamination in Potable Wells...	
<b>Food Safety and Protection</b>	Outbreaks, Outbreaks and Outbreaks- Chefs Take on Food Safety	Using Risk Analysis to Inform Microbial Food Safety Decisions	Nanotechnology: Potential Impacts on Food Safety		Investigation of a National Listeria Outbreak	2009 Salmonella Typhimurium Outbreak	Microbiological & Epidemiological Approach for Food Safety
<b>Onsite Wastewater Systems/Water Pollution</b>	EPA's Decentralized Wastewater Program: What Does the Future Hold?	Estimating Residential Flows on Rooms Instead of Bedrooms	Measuring Gravity Sewer Flow Accurately		Monitoring Drinking and Recreational Waters for...	Lake Huron to Lake Erie Corridor Drinking Water Protection...	Public Health Response through Partnerships...
<b>Swimming Pools/ Recreational Waters [APSP]/[NEHA]</b>	Virginia Graeme Baker Pool and Spa Safety Act	Recreational Water Illness	Pool Operations from the Operator's Perspective		Treated Recreational Water- Associated Outbreaks of Cryptosporidiosis	Recreational Water Illness and Aquatic Facility...	
<b>Terrorism and All-Hazards Protection</b>	Impacts of Pending Biosafety and Biosecurity Legislation on EHS Departments and Professionals...	FDA's Food Defense Oversight Team's Outreach, Collaboration and Awareness...	Development of a Food Emergency Response Plan Template for Southeastern States		Radiation and Environmental Health Response		
<b>Uniformed Services EH Association</b>	The History of the Sanitarian Category of the U.S. Public Health Service	Establishing an Environmental Health Surveillance Program for Forward Basing	The Inactive Reserve Corps (IRC) of the Commissioned Corps of the United States Public Health Service (USPHS)...		Chromate and Hexavalent Chromium Exposure from Pneumatic Sanding...	Project Management for the Military Environmental Health Professional	<i>Salmonella Sainipaul</i> Outbreak Associated with Tomatoes and Peppers with Emphasis on...

## Learning Laboratory

<b>Drinking Water/ Water Quality</b>	When Every Drop Counts - Public Health Considerations for Drought						
<b>General Environmental Health</b>	Pecha Kucha: A Different Presentation Format (PROFESSIONAL DEVELOPMENT)	Inspector Idol (PROFESSIONAL DEVELOPMENT)			Help Raise the Visibility of Environmental Public Health, Develop Good Educational Materials, Lessons from the Field (PROFESSIONAL DEVELOPMENT) 1:00 - 2:20pm		Alternative Outreach Methods: Using Magic and Humor 2:30 - 3:50pm (PROFESSIONAL DEVELOPMENT)
<b>Food Safety and Protection</b>			Trading Scheduled Inspections for Hand Hygiene Active Managerial Control 10:00 - 11:20am		Food Safety Training Showcase 1:00 - 2:20pm		A Mock Deposition of a Restaurant Inspector 2:30 - 3:50pm
<b>Hazardous Materials and Toxic Substances</b>	Is Everyone Getting Your Message? Develop Effective Risk Reduction Messages and Outreach Strategies for a Non-English Speaking Community (PROFESSIONAL DEVELOPMENT)		The National Conversation on Public Health and Chemical Exposures		Living, Gardening, and Playing in Arsenic and Metal Contaminated Soils		
<b>Onsite Wastewater Systems</b>					Regulators and Manufacturers: Roles and Responsibilities		
<b>Sustainability</b>	The Case Against Anthropogenic Climate Change	The Science Behind Climate Change	Effects Of Climate Change On Human Health: CDC Takes Action		Health Disparities and Climate Change		

# WEDNESDAY AGENDA

---

- 7:30am – 12:00Noon ..... NEHA Registration | **Grand Hall West Foyer**
- 8:00 – 10:00am ..... EPA Regional Meeting | **Harris Room**
- 8:00 – 12:00Noon ..... EPA Regional Meeting | **Kennesaw Room**
- 8:30am – 3:50pm ..... Educational Sessions | **See Wednesday Educational Sessions**
- 12:00Noon – 5:00pm ..... NEHA Information Desk | **Grand Hall West Foyer**
- 12:00Noon – 5:00pm ..... Environmental Health Officers Professional  
Advisory Committee (EHOPAC) | **Hanover C**
- 6:30 – 7:00pm..... Cocktail Hour | **Centennial Ballroom Foyer**
- 7:00 – 9:30pm..... President’s Banquet | **Centennial Ballroom I-II**

## **MEETINGS**

---

- 8:30am – 5:00pm ..... Association of Pool and Spa Professionals (APSP)  
Recreational Water Quality Meeting | **Edgewood Room**
- 11:00am – 12:00Noon ..... NEHA General Assembly | **Courtland Room**
- 1:30 – 3:00pm ..... EHAC–EHTER Development Meeting | **Harris Room**
- 3:00 – 4:30pm ..... State Board Forum | **Greenbriar Room**

## **CDC TOURS**

---

Check with NEHA registration desk for tour information and availability.

# WEDNESDAY EDUCATIONAL SESSIONS-AT-A-GLANCE



Lecture Hall

8:30-9:20am

9:30-10:20am

10:30-11:20am

1:00-1:50pm

2:00-2:50pm

3:00-3:50pm

<b>Drinking Water Quality</b>	Developing a National Protocol for Drinking Water Advisory Decision-Making Process	EHS-Net Drinking Water Program Pilot Study of Unregulated Water...	Using an Innovative Electronic Interface to Develop a Drought Guidance...	Implementing Water Safety Plans in the Caribbean and Latin America: A WHO Methodology for Managing...	Pilot Initiative for the Joint Development of a Program of Action for the Minimization of Land-based Sources...	The Role of Public Health Surveillance in Water Security
<b>Emerging Pathogens</b>	Lessons Learned: Waterborne Disease Detection, Surveillance...	Bird Flu	The Changing Epidemiology of Escherichia coli O157:H7: From Hamburgers to...			
<b>Food Safety and Protection</b>	Creating and Implementing an Integrated Food Safety Management System	Five Days, 11,511 meals – Catering at the Republican National Convention	CFR Consensus Guidelines for Foodborne Disease Outbreak Detection and Response	Measuring the Effectiveness of the Nation's Retail Food Protection System	Solving our Supply Chain Food Safety Dilemma: the Global Food Safety Initiative	Rising Waters and Rising Concerns - Food Safety Amidst the 2008 Floods
<b>General Environmental Health</b>	Lead Poisoning and Prevention: Renovate Right!	12 Million Reasons Why to Ensure a Competent Food Service Safety Program	Communicating the Value of Environmental Health: How to Convince Your Mom...	Critical Thinking: Analyzing What You Read and Hear...	The Seven Most Important Things I've Learned About Environmental Health...	Open the Door to Your Environmental Health Consulting Business...
<b>Hazardous Materials and Toxic Substances</b>	Integrated Mercury Spill Response by Local, State, and Federal Government Agencies...	An Update of fMMTRAK Hazardous Materials and Food Safety Programs	Panel Discussion - Removing Barriers: Collaborative Problem-Solving to Achieve...	Farmworker Pesticides Exposure in the New Mexico Border Region...	Assessment of Environmental Justice and Health Disparities at the County Level in the US	
<b>H1N1 Influenza</b>	Science Behind H1N1	Challenging H1N1 Policy Issues	Coordination with Local Health and Community Authorities in School Closings and Underserved Hispanic Populations in the Midst of H1N1	How Fulton County, GA Responded to H1N1	Information, Technology and Response Issues with H1N1	
<b>Indoor Air Quality</b>	Not in Kansas Anymore: IAQ Surprises from Major Storms	Radon: the Forgotten Menace	State Smoking Prohibitions in Public Places: Effectively Protecting Employees and the Public from Secondhand Smoke Exposure	Tools for Schools	Psychology of IAQ	Twenty-Five Years of IAQ Complaint Resolution
<b>Onsite Wastewater Systems</b>					SORA Sessions 10:15 – 5:15 pm	
<b>Learning Laboratory</b>						
<b>CDC Tours</b>	Track A = CDC's Chamblee Campus Tour 8:30 – 10:30am	Track B = EOC + Public Health Odyssey Museum 11:00am – 1:00pm	Track C = Infectious Disease Lab + Public Health Odyssey Museum 1:30 – 3:30pm			
<b>Children's Environmental Health</b>	Tools and Tips for Home Visits: Successful Environmental Health Education and Behavior Change 9:00 – 10:30am					
<b>Institutions and Schools Environmental Health</b>	Food Defense is Important for Schools Too: The New Update for the Food-Safe Schools Action Guide Toolkit	Implementation of International Safety, Health, and QC/QA Standards in Environmental Health Laboratories				
<b>General Environmental Health</b>		Recreational Health Plan Made Simple				
<b>Terrorism and All-Hazards Protection</b>		Building Trust and Gaining Community Support Through Effective Communication... 10:00am – 12:00 noon	FDA's Food Defense Oversight Team's Outreach, Collaboration and Awareness: The Expanding Umbrella of Food Protection			

# EXHIBITION AGENDA

Grand Hall West

\* Must be present to win.

## SUNDAY

- 12:00 Noon – 5:00pm ..... Exhibitor Set Up
- 6:00 – 9:00pm ..... Exhibition Grand Opening & Party
- 8:30pm ..... Door Prize Winner Announced\*

## MONDAY

- 8:00am – 3:30pm ..... Exhibition Open
- 8:00 – 11:00am ..... Poster Session
- 10:00am ..... Door Prize Winner Announced\*
- 11:00am ..... Silent Auction Finale\*
- 11:30am – 12:45pm ..... Lunch-n-Learn (Cash Concession Lunch)
- 1:30pm ..... Door Prize Winners Announced\*
- 3:30 – 6:00pm ..... Exhibitor Tear-Down

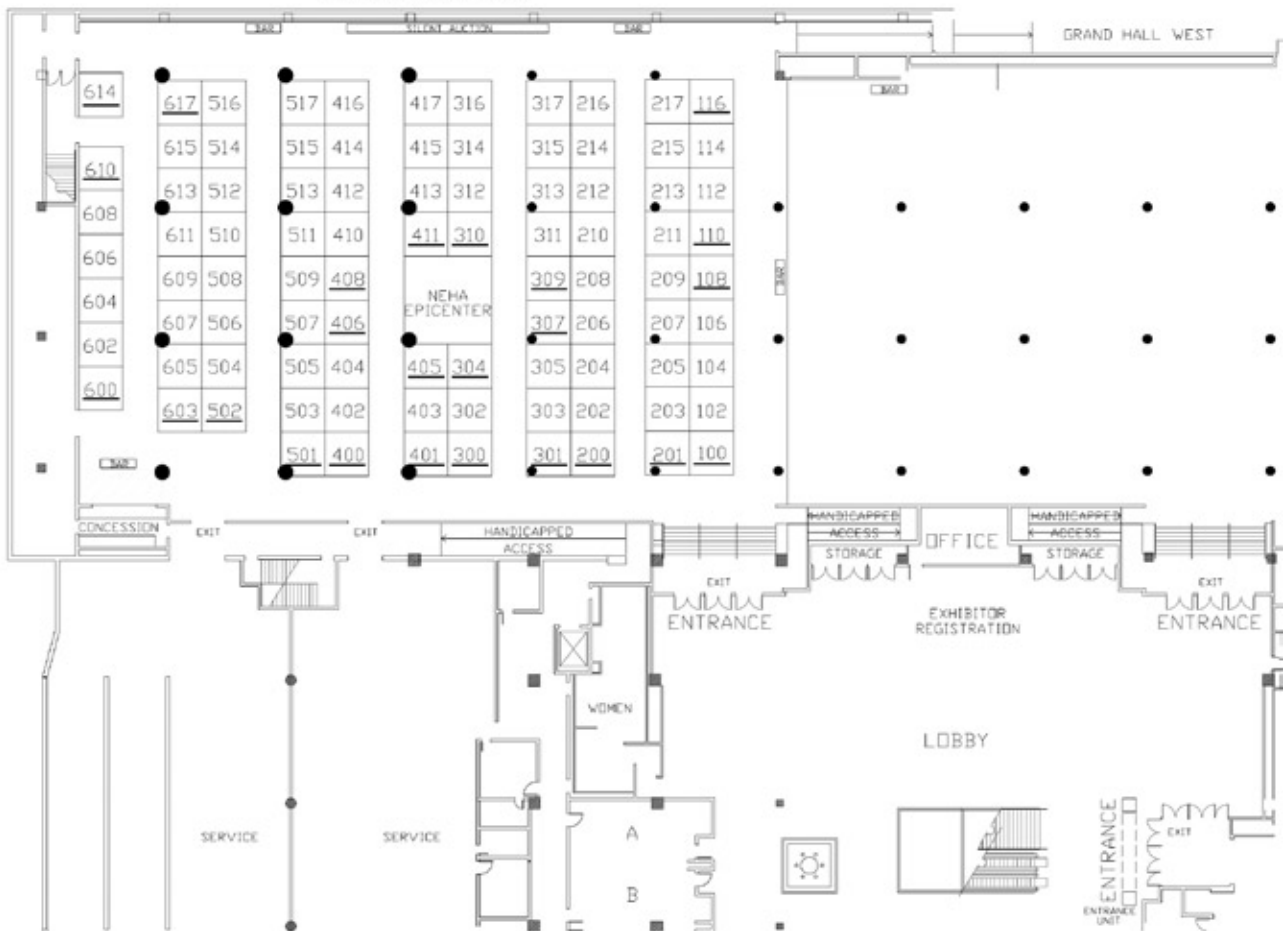
### GRAND HALL WEST

**NOTES :**

- 1) ALL BOOTHS ARE 10' X 10' UNLESS OTHERWISE NOTED
- 2) ALL AISLES ARE 8' UNLESS OTHERWISE NOTED
- 3) 95 TOTAL BOOTHS
- 4) UNDERLINED BOOTH NUMBERS ARE PRIME BOOTHS
- 5) ALL FLOORPLANS ARE SUBJECT TO FIRE MARSHALL APPROVAL

REVISIONS		
#	DATE	TIME
1	5/25/09	5:00 AM
2	3/20/09	11 AM

**AEX**  
CONVENTION SERVICES  
3089 ENGLISH CREEK AVENUE  
ROCK HAVEN TWP. NJ 08234  
PHONE: (908) 272-1600  
FAX: (908) 272-1609



## ASSOCIATION

Albuquerque Hispano Chamber Conventions & Tourism | Booth: 613  
 American Academy of Sanitarians (AAS) | Booth: 215  
 Association of Environmental Health Academic Programs (AEHAP) | Booth: 207  
 Association of Food and Drug Officials | Booth: 315  
 Association of Professional Piercers | Booth: 312  
 CSA International | Booth: 309  
 Environmental Public Health Tracking | Booth: 213  
 EPA, Memorandum of Understanding Coalition: EPA/OWM, CIDWT, NACo, NATaT, NAWT, NEHA, NOWRA, NESC, RCAP, WEF | Booth: 210  
 National Association of Local Boards of Health (NALBOH) | Booth: 607  
 National Environmental Health Association (NEHA) | Booth: NEHA Epi-Center  
 Schools of Public Health Application Service | Booth: 206

## CHILDREN'S ENVIRONMENTAL HEALTH

EPA | Booth: 208  
 EPA, Lead Program | Booth: 211  
 Hybrivet Systems, Inc | Booth: 514  
 National Center for Healthy Housing (NCHH) | Booth: 110

## COMPUTER APPLICATIONS

Ayres Associates | Booth: 217  
 ChemWatch NA | Booth: 313  
 HealthSpace USA, Inc | Booth: 416  
 Decade Software | Booth: 100/201  
 eBridge Solutions Document Management | Booth: 307  
 Garrison Enterprises | Booth: 300/301/401  
 Panasonic Computer Solutions Company | Booth: 603  
 Vivid Learning Systems | Booth: 114

## DRINKING WATER

Underwriters Laboratories, Inc (UL) | Booth: 304

## EDUCATION & TRAINING

Albuquerque Hispano Chamber Conventions & Tourism | Booth: 613  
 Association of Environmental Health Academic Programs (AEHAP) | Booth: 207  
 Association of Food and Drug Officials | Booth: 315  
 Association of Professional Piercers | Booth: 312  
 Center for Domestic Preparedness | Booth: 507  
 Center for Environmental Research & Technology, Inc. | Booth: 517  
 Columbia Southern University | Booth: 302  
 Elements | Booth: Grand Hall West Foyer  
 Food Handler, Inc | Booth: 104  
 Kairak | Booth: 405  
 Michigan Center for Public Health Preparedness | Booth: 402  
 MindLeaders | Booth: 408  
 National Environmental Health Association (NEHA) | Booth: NEHA Epi-Center  
 National Swimming Pool Foundation | Booth: 204  
 New Water Solutions, Inc | Booth: 608  
 NSF International | Booth: 200/202  
 Paster Training | Booth: 205  
 Prometric | Booth: 406  
 Schools of Public Health Application Service | Booth: 206  
 Stingl Products, LLC | Booth: 606  
 The University of Findlay | Booth: 314  
 Vivid Learning Systems | Booth: 114

## FOOD SAFETY & PROTECTION

Chicopee: A PGI Company | Booth: 112  
 Cooper-Atkins Corporation | Booth: 102  
 CSA International | Booth: 309  
 Custom Data Processing (CDP) | Booth: 400  
 Environmental Health Testing | Booth: 303  
 FDA/Center for Food Safety and Applied Nutrition (CFSAN) | Booth: 515  
 Food Handler, Inc | Booth: 104  
 Garrison Enterprises | Booth: 300/301/401  
 Intertek | Booth: 501  
 Kairak | Booth: 405  
 LaMotte Company | Booth: 106  
 Mars Air Systems | Booth: 411  
 MindLeaders | Booth: 408  
 Paster Training | Booth: 205  
 Prometric | Booth: 406  
 Same Day Distributing, Inc | Booth: 504  
 San Jamar | Booth: 502  
 Shat-R-Shield, Inc | Booth: 209  
 Sneezeguard Solutions, Inc | Booth: 417  
 Tundra Specialties | Booth: 412

Underwriters Laboratories, Inc (UL) | Booth: 304  
 USDA Food Safety and Inspection Service | Booth: 414

## GENERAL ENVIRONMENTAL

American Academy of Sanitarians (AAS) | Booth: 215  
 BeeSafe Systems | Booth: 404  
 Bord na Móna | Booth: 516  
 Columbia Southern University | Booth: 302  
 Environmental Health Testing | Booth: 303  
 Environmental Public Health Tracking | Booth: 213  
 Forensic Analytical Laboratories, Inc | Booth: 410  
 Hybrivet Systems, Inc | Booth: 514  
 Infiltrator Systems, Inc | Booth: 415  
 National Association of Local Boards of Health (NALBOH) | Booth: 607  
 National Environmental Services Center (NESC) | Booth: 413  
 NCEH/ATSDR | Booth: 503/505  
 NSF International | Booth: 200/202  
 U.S. Public Health Service | Booth: 216

## GENERAL HEALTH

Vac-Alert Industries | Booth: 610

## GIS/GPS

Panasonic Computer Solutions Company | Booth: 603

## GOVERNMENT AGENCY

Centers for Disease Control and Prevention | Booth: 617  
 Center for Domestic Preparedness | Booth: 507  
 EPA | Booth: 208  
 EPA, Indoor Environments Division | Booth: 212  
 EPA, Lead Program | Booth: 211  
 EPA, Office of Wastewater Management | Booth: 214  
 National Library of Medicine | Booth: 216  
 NCEH/ATSDR | Booth: 503/505  
 U.S. Navy Recruiting Command | Booth: 605  
 U.S. Public Health Service | Booth: 216  
 USDA Food Safety and Inspection Service | Booth: 414

## HAZARDOUS WASTE

Pest West Environmental | Booth: 600

## INDOOR AIR QUALITY

EPA, Indoor Environments Division | Booth: 212  
 Forensic Analytical Laboratories, Inc | Booth: 410  
 Intertek | Booth: 501  
 Mars Air Systems | Booth: 411  
 NSF International | Booth: 200/202

## ONSITE WASTEWATER

Ayres Associates | Booth: 217  
 Bio-Microbics Inc | Booth: 602  
 Bord na Móna | Booth: 516  
 Custom Data Processing (CDP) | Booth: 400  
 Eljen Corporation | Booth: 317  
 EPA, Office of Wastewater Management | Booth: 214  
 Hoot Systems, LLC | Booth: 403  
 Infiltrator Systems, Inc | Booth: 415  
 Jet, Inc | Booth: 305  
 National Environmental Services Center (NESC) | Booth: 413  
 NSF International | Booth: 200/202

## PUBLISHER

Springer | Booth: 203

## SWIMMING POOLS/REC WATERS

BeeSafe Systems | Booth: 404  
 LaMotte Company | Booth: 106  
 National Swimming Pool Foundation | Booth: 204  
 New Water Solutions, Inc | Booth: 608  
 NSF International | Booth: 200/202  
 Palintest | Booth: 116  
 Stingl Products, LLC | Booth: 606  
 Vac-Alert Industries | Booth: 610

## TERRORISM AND ALL-HAZARDS PREPAREDNESS

ChemWatch NA | Booth: 313  
 The University of Findlay | Booth: 314

## VECTOR CONTROL & ZOOLOGICAL DISEASES

Orkin Commercial Services | Booth: 310  
 Pest West Environmental | Booth: 600