

# The CDC Social Vulnerability Index

A tool for measuring community-level social vulnerability

**Elizabeth Pembleton, MPH**

CDC/ATSDR Social Vulnerability Index Coordinator  
Geospatial Research, Analysis, & Services Program  
Centers for Disease Control and Prevention



National Center for Environmental Health  
Agency for Toxic Substances and Disease Registry



# The History of the CDC/ATSDR Social Vulnerability Index

- The Pandemic and All-Hazards Preparedness Act of 2006 cited public health preparedness and response capabilities as critical needs for the United States.
- The Centers for Disease Control and Prevention (CDC) decided to build agency capacity by addressing social vulnerability to disasters.
- The Geospatial Research, Analysis, and Services Program (GRASP) began developing SVI in 2007 and disseminated SVI in 2011.



# The Purpose of the CDC Social Vulnerability Index

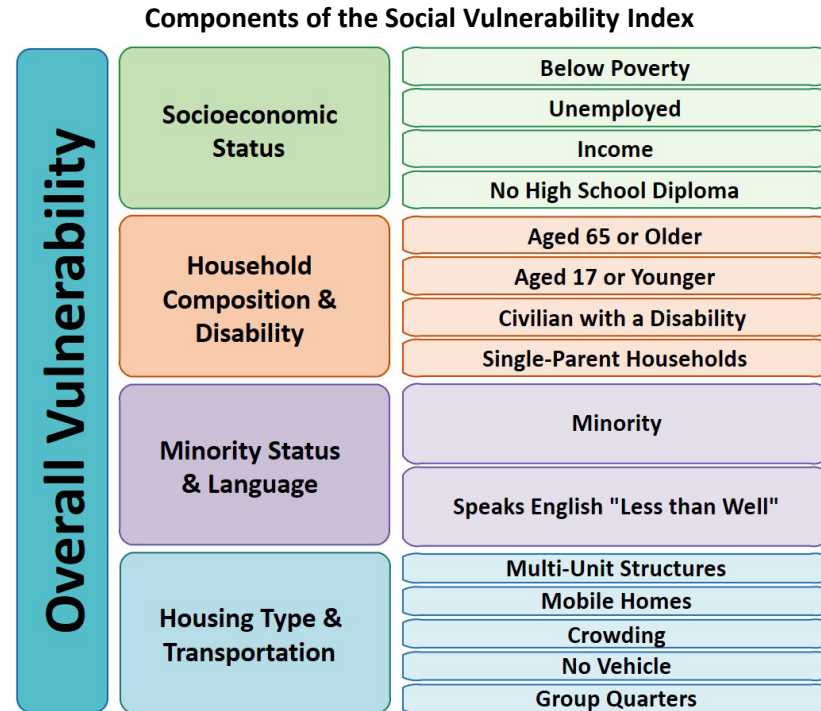


- Social vulnerability refers to the demographic and socioeconomic factors that adversely affect communities that encounter hazards and other community-level stressors.
- SVI was developed as an index, database, and mapping tool to assist public health officials with identifying socially vulnerable communities within their jurisdictions.

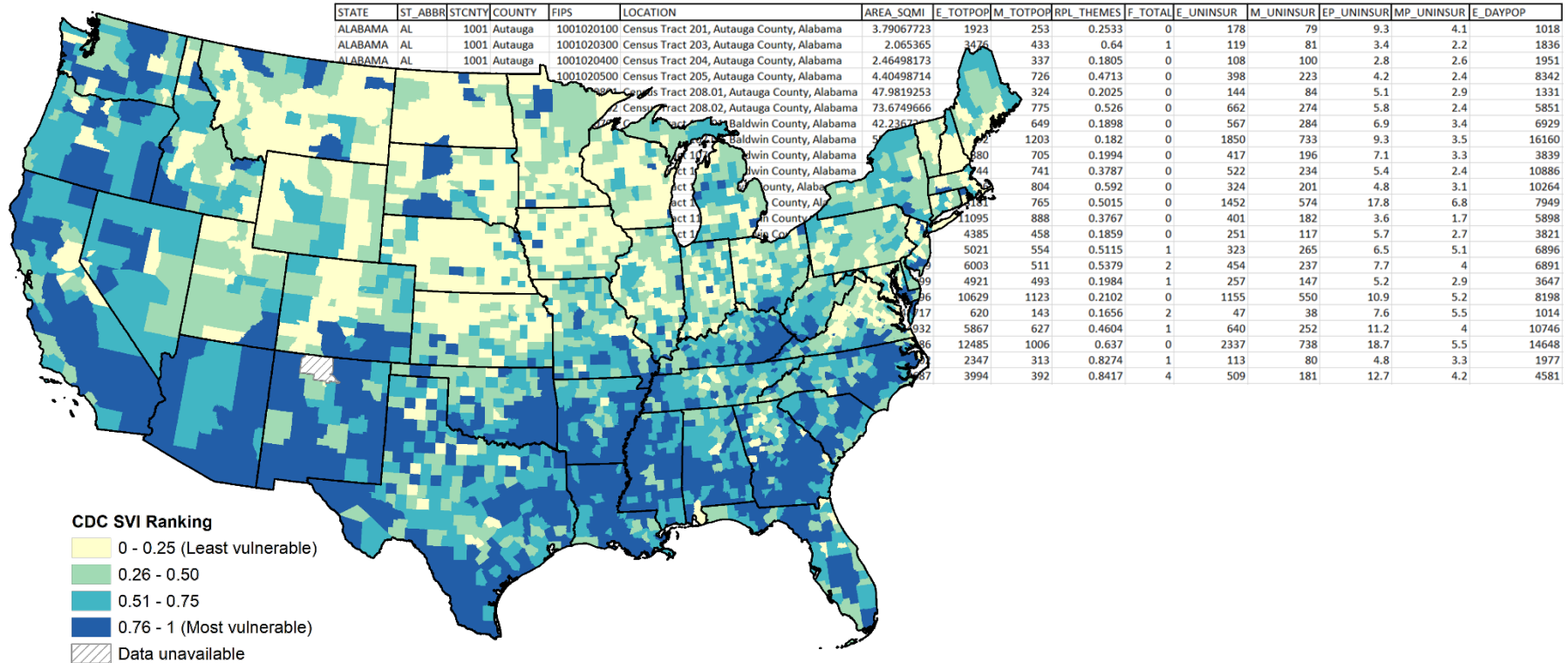


# The Methodology of the CDC Social Vulnerability Index

- SVI uses Census Bureau data to measure the relative social vulnerability of U.S. communities.
- SVI uses percentile ranks to score the social vulnerability of a community from 0 to 1.
- SVI has been developed for U.S. census tracts and counties at national and state levels.
  - Includes Puerto Rico & tribal tracts
- SVI is available for 2000, 2010, 2014, 2016, and 2018.

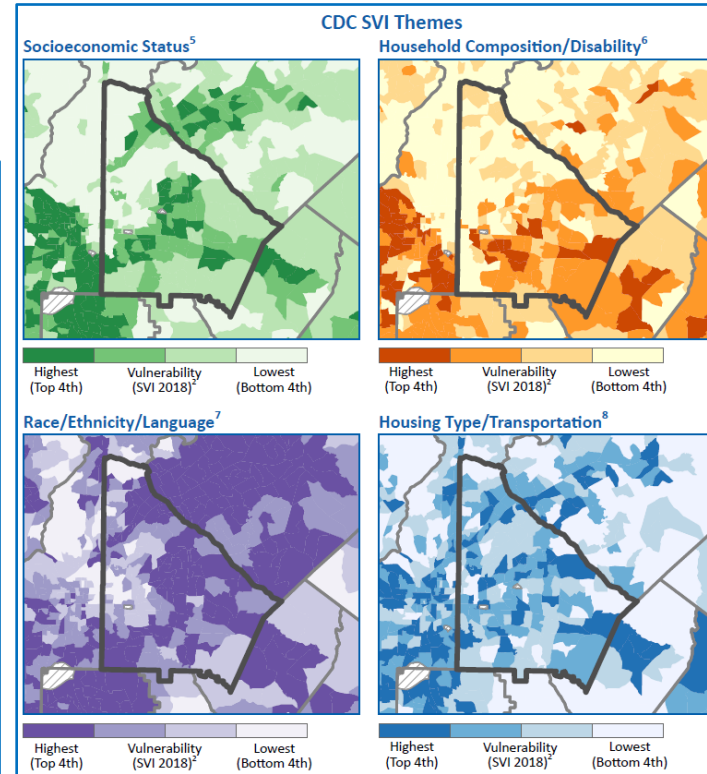
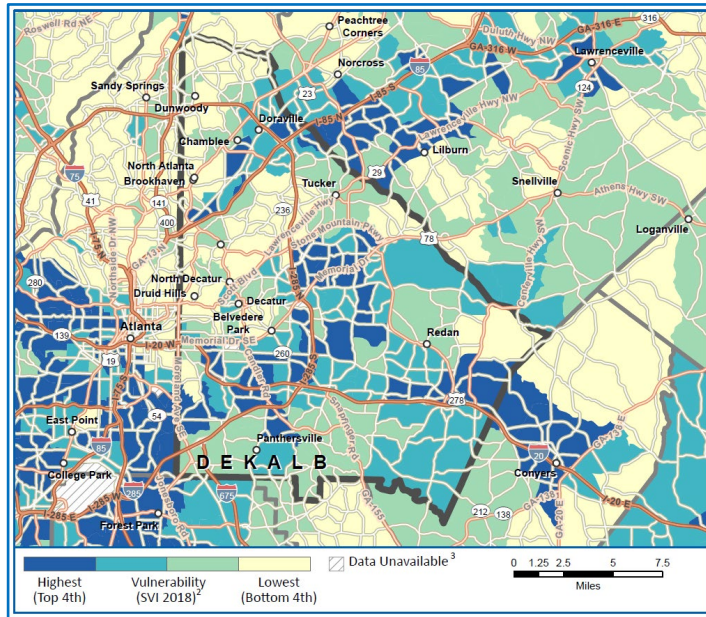


# The CDC Social Vulnerability Index is A Complete Toolbox



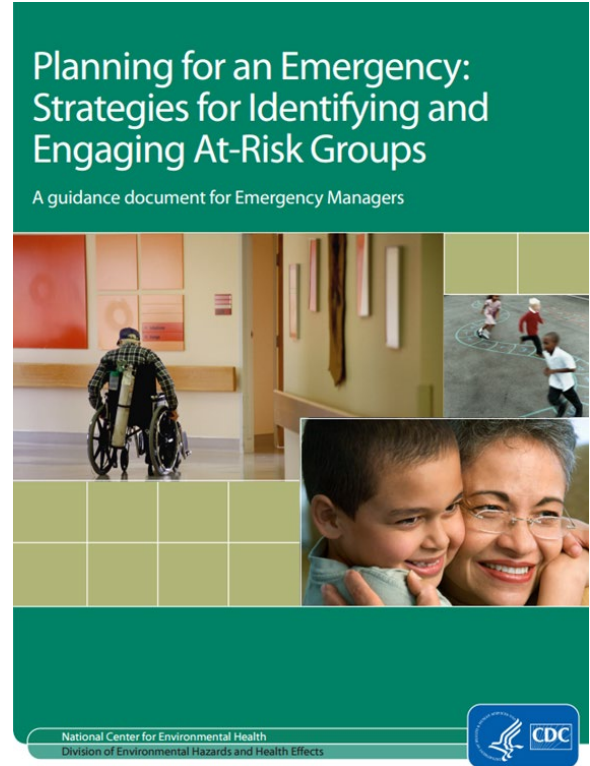


# CDC Social Vulnerability Index Prepared County Maps

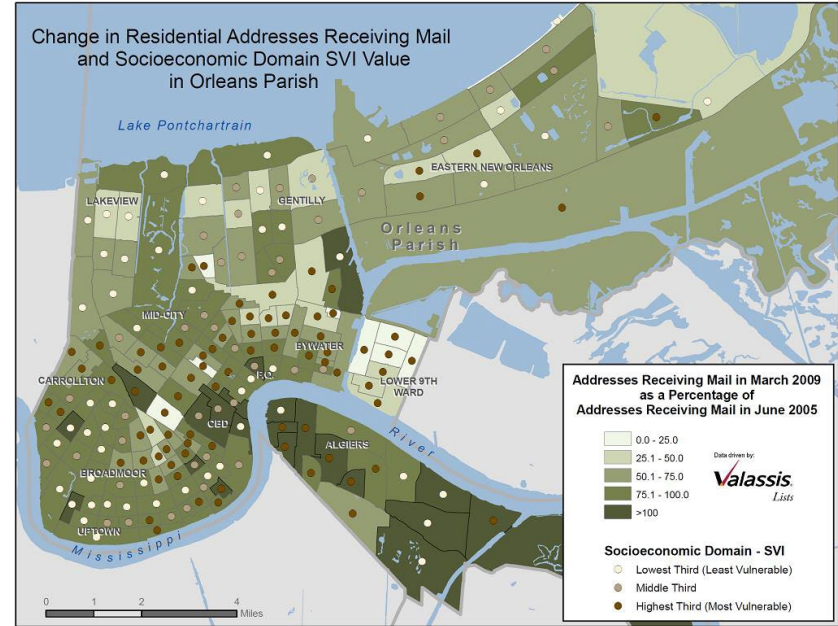
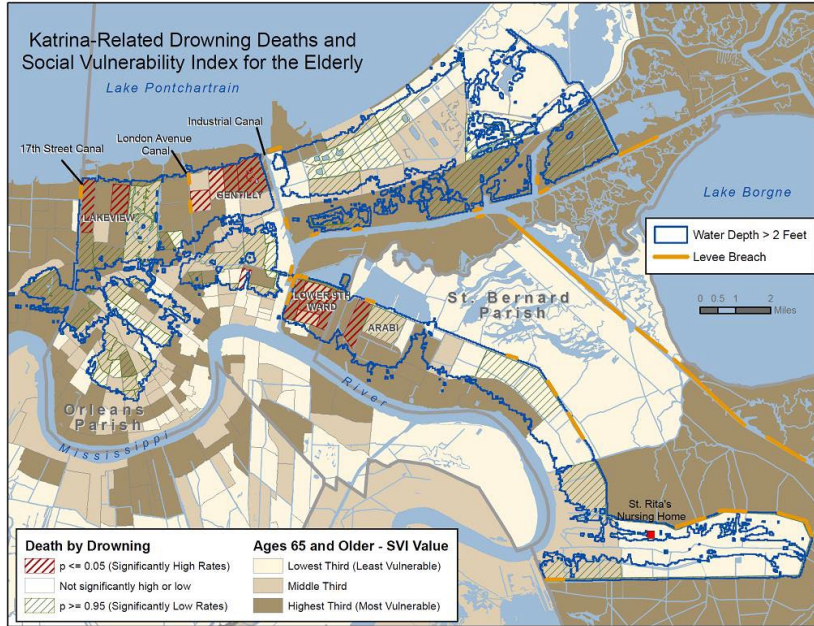


# The Utility of the CDC Social Vulnerability Index

- SVI has been used by federal, state, local, and academic partners with:
  - Physical hazards (e.g., hurricanes, flooding, tornadoes, wildfires)
  - Planning hazard mitigation and public health funding allocation
  - Pathogenic disease outbreaks (e.g., equitable placement of COVID-19 testing and vaccine centers)
  - Non-disaster health outcomes (e.g., obesity, injury mortality, cancer, physical inactivity)

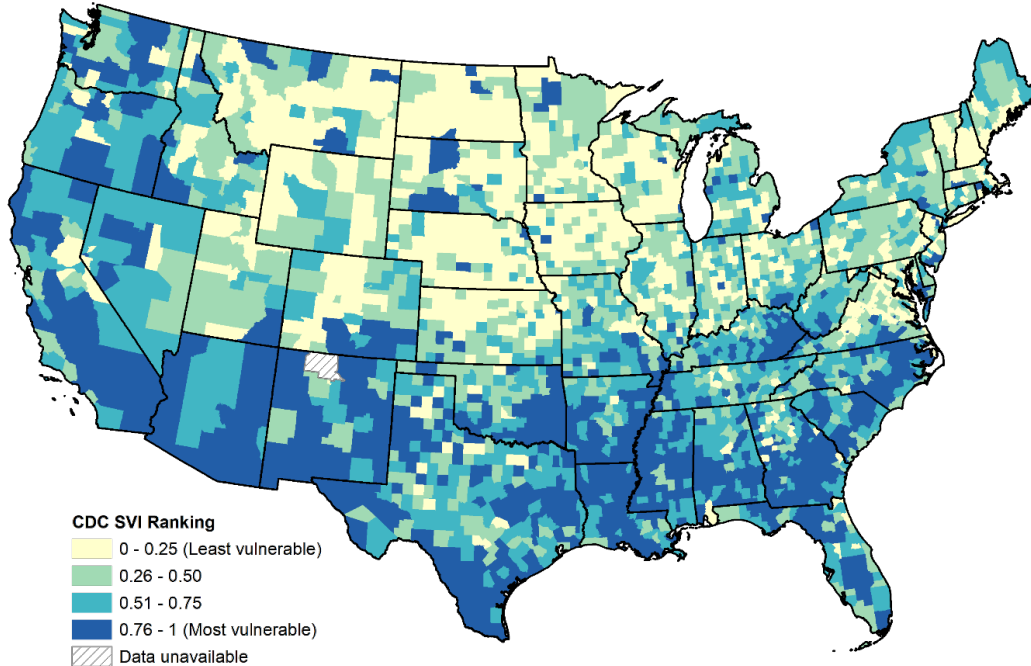


# Example: Hurricane Katrina Recovery and SVI





# Summary of the CDC Social Vulnerability Index



- SVI measures 15 demographic and socioeconomic factors to identify socially vulnerable communities across the U.S.
- SVI is measured for all U.S. census tracts and counties on a scale of 0 to 1 (1 = most vulnerable).
- SVI is useful for assisting communities in need during public health crises.



# Partners of the CDC Social Vulnerability Index



esri



U.S. Climate  
Resilience  
Toolkit



American  
Red Cross

LSC

America's Partner  
for Equal Justice

LEGAL SERVICES CORPORATION



Save the Children®



casey family programs



FEMA



King County



Direct Relief

BRACE - Illinois  
Building Resilience Against Climate Effects



National Environmental Public Health Tracking Network



Georgia Emergency Management and Homeland Security Agency  
Maps/Apps and Information Portal



GRASP



CATHOLIC CHARITIES USA DISASTER OPERATIONS MAP

# DEMONSTRATION OF THE CDC SOCIAL VULNERABILITY INDEX



# The CDC Social Vulnerability Index Team

- Hallie Averbach
- Jennifer Bain
- Kevin Berney
- Frank Curriero
- Ryan Davis
- Andy Dent
- Barry Flanagan
- Kelly Fletcher
- Chelsea Franz
- Shannon Graham
- Marissa Grossman
- Lindsay Hicks
- Pearl Kaplan
- Nadim Khatib
- Erica Lehnert
- Brian Lewis
- Antonio Liu
- Lance Owen
- Elizabeth Pembleton\*
- David Rickless
- Adonica Scott
- Danielle Sharpe
- Adam Taylor
- Angela Walker
- Ari Whiteman
- Grete Wilt

\*Coordinator of the CDC/ATSDR Social Vulnerability Index





# Any Questions?

SVI Website: <https://www.atsdr.cdc.gov/placeandhealth/svi/index.html>

SVI Coordinator Email: [svi\\_coordinator@cdc.gov](mailto:svi_coordinator@cdc.gov)



National Center for Environmental Health  
Agency for Toxic Substances and Disease Registry

