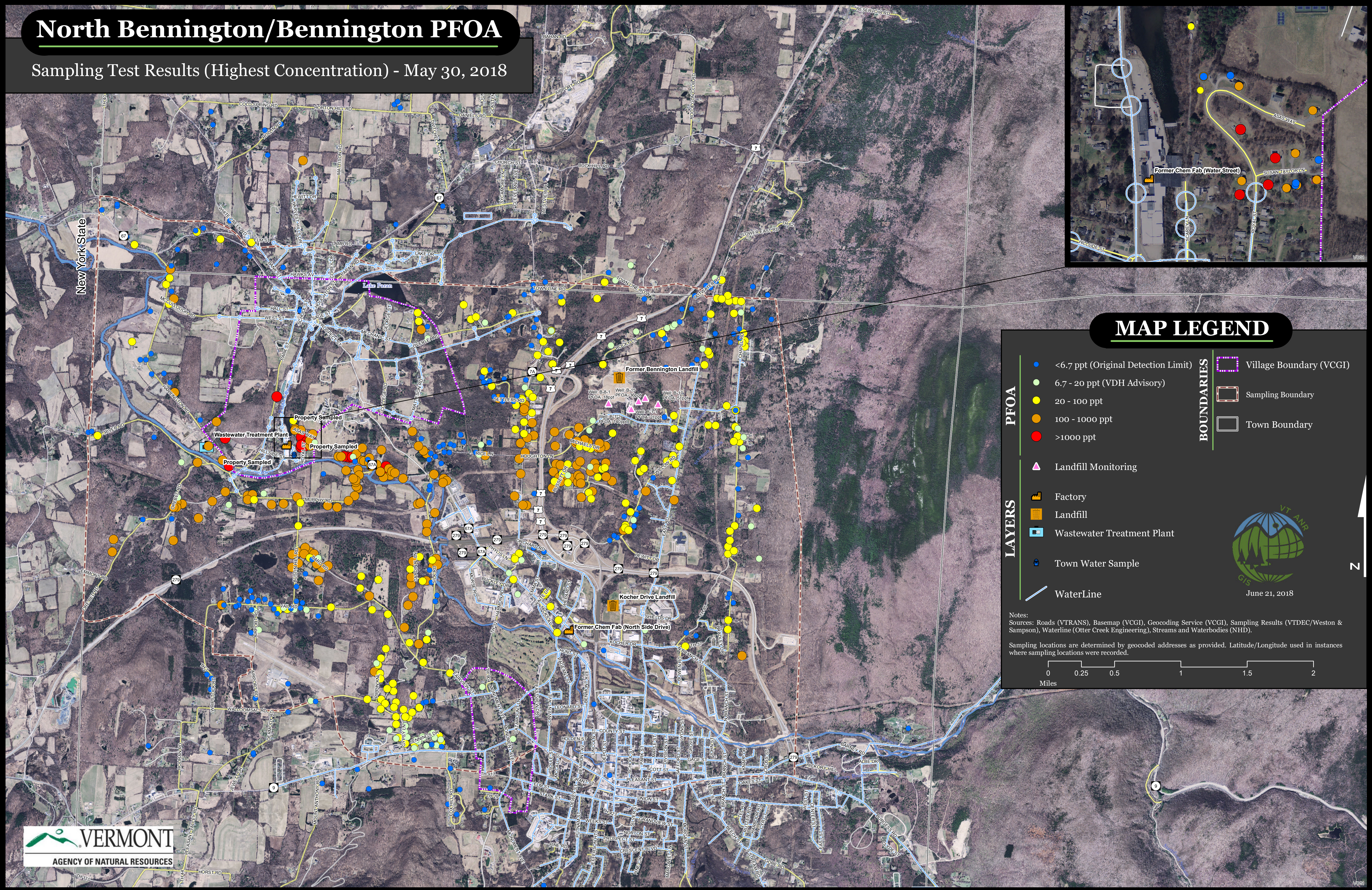


North Bennington/Bennington PFOA

Sampling Test Results (Highest Concentration) - May 30, 2018



MAP LEGEND

- | | | | |
|---------------|---|-------------------|---|
| PFOA | ● <6.7 ppt (Original Detection Limit) | BOUNDARIES | □ Village Boundary (VCGI) |
| | ● 6.7 - 20 ppt (VDH Advisory) | | □ Sampling Boundary |
| | ● 20 - 100 ppt | | □ Town Boundary |
| | ● 100 - 1000 ppt | | |
| | ● >1000 ppt | | |
| LAYERS | ▲ Landfill Monitoring | | |
| | Factory | | |
| | Landfill | | |
| | Wastewater Treatment Plant | | |
| | Town Water Sample | | |
| | WaterLine | | |

Notes:
 Sources: Roads (VTRANS), Basemap (VCGI), Geocoding Service (VCGI), Sampling Results (VTDEC/Weston & Sampson), Waterline (Otter Creek Engineering), Streams and Waterbodies (NHD).
 Sampling locations are determined by geocoded addresses as provided. Latitude/Longitude used in instances where sampling locations were recorded.

0 0.25 0.5 1 1.5 2
Miles

